



2013-2014 Diversity Programs Kansas State University College of Engineering

The Multicultural Engineering Program at Kansas State University was established in 1977.

Multicultural Engineering Program Mission:

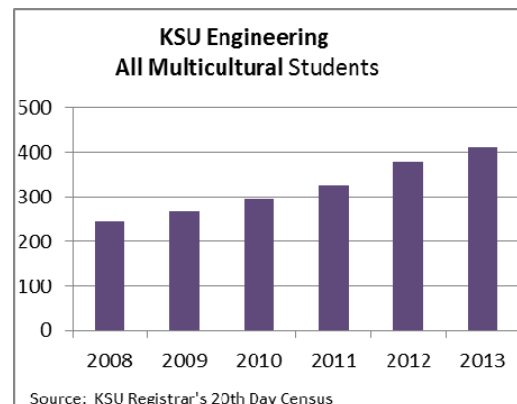
To identify, recruit, mentor and graduate students who are underrepresented in engineering; specifically those who self-identify as African American, Hispanic, or Native American students enrolled in the College of Engineering.

The Multicultural Engineering Program: **Builds Community, Provides Resources, Promotes Professional Development, and Recruits Students.**

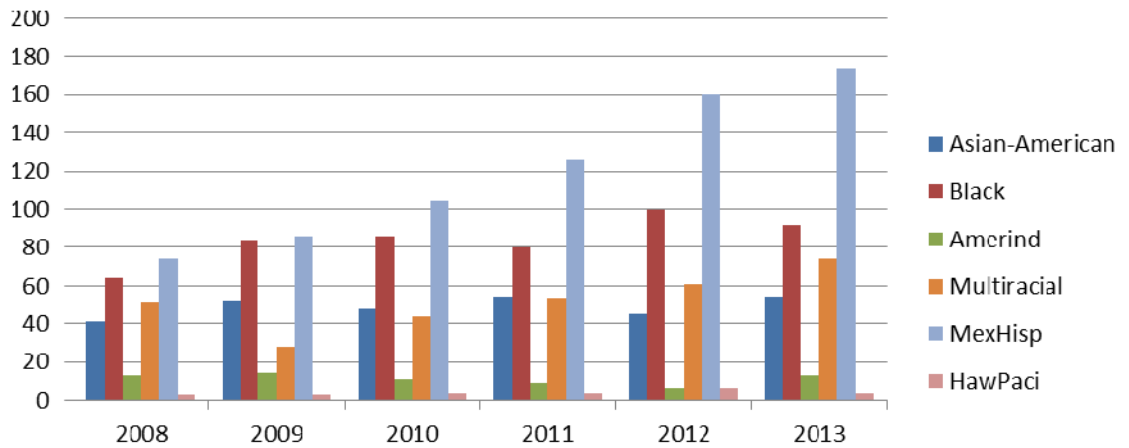
KSU MEP Goals

The Multicultural Engineering Program goals stem from the University and College of Engineering goals.

- **KS LSAMP: Goal of doubling the number of underrepresented minorities graduating in STEM degrees by 2018.**
 - Kansas-Lewis Stokes Alliance for Minority Participation (LSAMP) is a National Science Foundation grant of 2.5 Million to accomplish this goal by 2018.
- **KS UEIA: Goal of increasing from 423 graduates to 587 graduates per year, a target increase of 164 graduates by 2021.**
 - State of Kansas University Engineering Initiative Act (UEIA) is a 10 year investment in the three engineering colleges in the state of Kansas
- **Retention of our multicultural students in engineering is a critical piece of our plan to meet these two goals in engineering.**
- **99.5% increase in multicultural students from 2008 to 2013 (206 to 411 students)**
 - Total engineering enrollment increased from 2960 to 3301 students between 2008 and 2013 (11.5%)
 - 11% of the college of engineering is now our underrepresented students



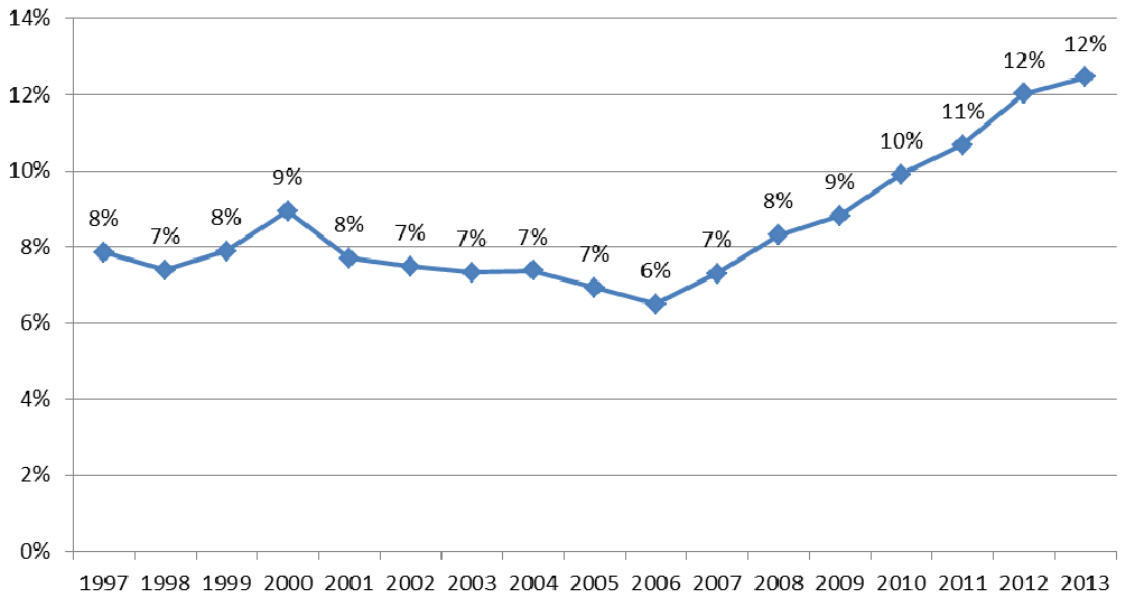
KSU CoE All Underrepresented Students by Ethnicity (incl Asian-Americans)



Source: KSU Registrar's 20th Day Census

Prepared by: KSU Multicultural Engineering Program

KSU CoE Percent of Underrepresented Students: Freshmen through Senior class (incl Asian-Americans)



Source: KSU Registrar's 20th Day Census

Prepared by: KSU Multicultural Engineering Program