

**In This Issue:**

- 1 Tonight's agenda  
Sudoku
- 2 Speaker Profile  
ASCE Structure Profile
- 3 Important Information  
Officer Contacts  
Schedule  
Sudoku Answers

		1					9
8						3	
	3	8			6		5
5	2		9				
	4		3			7	
			4			8	2
3		9		2		1	
	1						3
7				6			

(Puzzle from Sudoku Collection:  
[www.sudokucollection.com](http://www.sudokucollection.com))

## Note Card Info

Name:  
Date:  
Student Member: Y/N  
National Member: Y/N  
National Student Member Number:

**Introductions:**

Practitioner Advisors: Dave Karnowski  
Peter Clark

Honorary Lifetime  
Contact Member: Bob Thorn

Faculty Advisors: Dr. Melhem  
Dr. Riding

**Officer Reports:**

President: Adam Emerson  
Vice President: Carl Peterson  
Treasurer: Vincent Studer  
Recording Secretary: Jennifer Sommerfeld  
Corresponding Secretary: Schyler Rohleder  
Newsletter Editor: Mark Stewart  
Historian: Robert Schweiger  
Student Council Rep: Claudia Gonzalez  
Freshman/Sophomore Rep: Logan Nichols  
Activities Chair: Travis Bailey  
Special Projects Chair: Logan Ortiz  
Webmaster: Jaime Quilty  
Steel Bridge Chairs: Chris Rottinghaus  
Andrew Wiederholt

Concrete Canoe Chairs: Jenny Swabb  
Mohammed  
Almohammedali  
Nathan Pohl  
Katlyn Buckley

Open House Chairs: Noura Saadi  
Alex Johnson  
Katie Walbridge

**Agenda:**

Announcements: Adam Emerson  
Introduction of Speaker: Carl Peterson  
Speaker: Senior Design Class

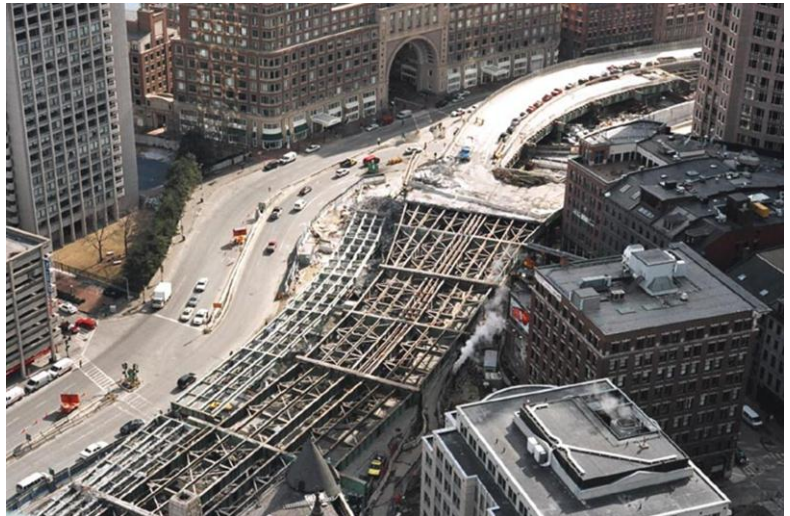


# Speaker Profile

## Seniors

Seniors in CE 585 or Senior Design have been working on this semesters senior project. Each semester a new project is given to graduating seniors to simulate a real world design project. Once the problem was given to the students the class was divided into six teams. Members of each team worked together to complete subtasks assigned to complete Task 2 of the project. Tonight, one member from three teams will present a subtask from Task 2.

# ASCE Structure Profile



## Central Artery/Tunnel Project

The central artery/tunnel project also known as the big dig was a project that converted the main highway in Boston into a 3.5 mile tunnel. The big dig quickly became the most expensive highway project in the U.S due to rising costs, poor scheduling, design flaws and poor execution. The big dig was 9 years over schedule and 12.2 billion dollars over budget. Originally the tunnel was to be opened in 1998 at 2.8 billion dollars. The tunnel was not complete until 2007 at 14.6 billion dollars.

Engineers were presented many challenges with the tunnel project. The downtown area through which the tunnels were to be dug was largely landfill and including two existing subway lines. Also, engineers faced countless numbers of pipes and utility lines to dig around.

# Officer Contacts

**President:**

Adam Emerson – *aaemer@ksu.edu*

**Vice President:**

Carl Peterson – *cjpeters@ksu.edu*

**Treasurer:**

Vincent Studer – *studerv@ksu.edu*

**Recording Secretary:**

Jennifer Sommerfeld –  
*jsommer@ksu.edu*

**Corresponding Secretary:**

Schylar Rohleder –  
*schywade@ksu.edu*

**Newsletter Editor:**

Mark Stewart – *mstew9@ksu.edu*

**Historian:**

Robert Schweiger –  
*rschwei2@ksu.edu*

**StuCo Rep:**

Claudia Gonzalez – *claudi1@ksu.edu*

**Fresh/Soph Rep:**

Logan Nichols – *logan94@ksu.edu*

**Activities Chair:**

Travis Bailey – *mb08@ksu.edu*

**Special Projects:**

Logan Ortiz – *laortiz4@ksu.edu*

**Webmaster:**

Jaime Quilty – *jquilty@ksu.edu*

**Steel Bridge Chairs:**

Chris Rottinghaus –  
*crott13@ksu.edu*  
Andrew Wiederholt –  
*andrewpw@ksu.edu*

**Concrete Canoe Chairs:**

Jenny Swabb – *swabb@ksu.edu*  
Mohammed Almohammedali –  
*ali1409@ksu.edu*  
Nathan Pohl – *npohl@ksu.edu*

4	6	5	1	7	3	8	2	9
8	9	2	5	6	4	1	3	7
1	3	7	8	2	9	6	4	5
5	2	1	7	9	8	3	6	4
6	4	8	2	3	5	9	7	1
9	7	3	6	4	1	5	8	2
3	8	9	4	5	2	7	1	6
2	1	6	9	8	7	4	5	3
7	5	4	3	1	6	2	9	8

(Puzzle from Sudoku Collection:  
[www.sudokucollection.com](http://www.sudokucollection.com))

# Important Information

**FE Review** manuals are available for purchase for \$85 each. Contact Vincent Studer if you are interested in purchasing the manual.

**Students must become national members to receive credit** for ASCE Student Membership. Registration is free and can be done online at <http://www.asce.org/>. Click "login" at the top of the page, then click "click here to create one" and follow the instructions to become a national member.

**Scholarships and Internships**

Kansas Water Environment Association Scholarship  
KS APWA's Steve Webb Memorial Scholarship  
American Council of Engineering Companies  
ACI Kansas Chapter  
ACI Missouri Chapter  
Alianza Scholarship  
Pavement Management Internship – City of Manhattan

# Schedule

Jan. 24 – **Assembly: Ron Altvater**

Feb. 7 – **Shawn Mellies, Engineer (City of Wichita)**

Feb. 21 – **Kiewit**

April 4-6 – **Regionals**

April 4 - **Thomas Paulson**

April 9 – **Joint Dinner**

April 11 – **Todd A. Wimmer (Union Pacific) & Officer Elections**

April 13 – **FE Exam**

April 19-20 – **Open House**

April 25- **ASCE Picnic**

May 2- **Assembly**

Speaker Profile

ASCE Structure Profile