

# **Community Health and Brownfields: How ATSDR Assists Communities**



**Agency for Toxic Substances and Disease Registry  
(ATSDR)**

**Michigan Association of Counties  
Traverse City and Escanaba, MI  
September 20 and 21, 2011**



U.S. Department of Health and Human Services  
Agency for Toxic Substances and Disease Registry

# Why Public Health and Brownfields/Land Reuse?

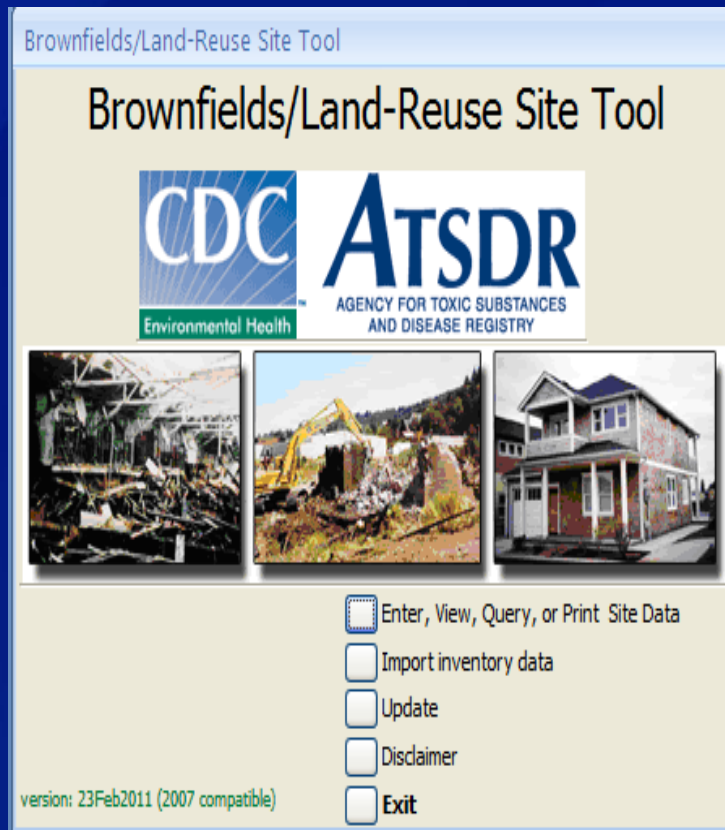
- ❑ **Environmental site assessments do not address public health**
- ❑ **Public health needs have been identified at these sites**
  - *Multiple sites = lower socioeconomic status.*
  - *Poverty, high crime rates and limited access to resources impact safety, increasing the likelihood of lowered health status.*
- ❑ **Land reuse sites are the larger “world” – encompass brownfields, and allow us to help without funding**

# Improving Public Health – ATSDR Community Resources

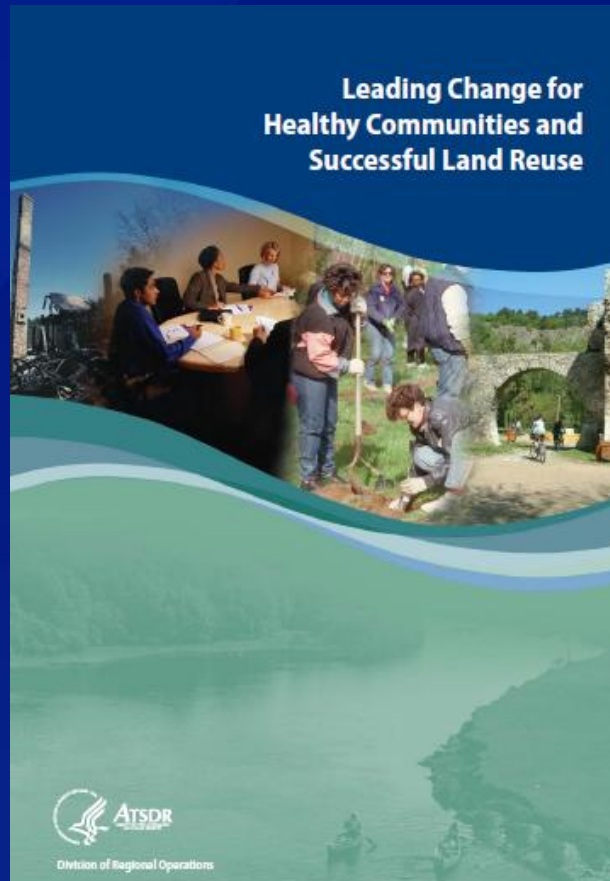
- ❑ **Site Inventory Tool**
- ❑ **Best Practices Guidance (Leading Changes book)**
- ❑ **Community Involvement Framework – Action Model**
  - *Community-driven indicators*
  - *Community input*
  - *Can be used to shape entire Brownfields Assessment outreach and activities*

# Site Inventory Tool

- *Provides a quick “snapshot” of a property*
- *Guide to inform stakeholders of land use decisions*
- *Records can be easily exported and imported using Excel to other planning tools such as Geographic Information Systems (GIS)*



# Leading Change Book ([www.atsdr.cdc.gov/sites/brownfields](http://www.atsdr.cdc.gov/sites/brownfields))



## Taking Action: the Action Model

- ❑ Focus on the “Development Community”
- ❑ Take 4 steps to assess community health status
- ❑ Elect a steward to track changes in indicators





# The Action Model Steps

Step 1: What are the issues in the community?



Step 2: How can development address these issues?



Step 3: What are the corresponding  
community health benefits?



Step 4: What data are needed to measure change?

# Portland – Example

Step 1: Issues	Step 2: Redevelopment Approach	Step 3: Health Benefit	Step 4: Measurement/ Indicator
No air quality monitoring aside from industry self reported emissions	Work with university and health partners to obtain and understand data on indicators of air quality	Improved understanding of air toxics and risks to health	<p># meetings with community, health, university partners</p> <p>Findings interpreted and shared collaboratively</p>
	Collaborate with DEQ to develop an inventory of data for modeled and monitored air quality data	<p>Cultivate relationship between DEQ and community</p> <p>Make informed decisions related to future industrial development based on data</p>	<p># meetings with community and DEQ</p> <p>Inventory air quality data</p> <p>Findings interpreted and shared collaboratively</p>



## Action Model Results

- ❑ **Community-driven indicators**
- ❑ **Communities can track changes in indicators over time**
  - *Requires long-term steward*
  - *Baraboo – changes in about 1/3 of measurement indicators*
- ❑ **Communities**
  - *Blue Island*
  - *Milwaukee*
  - *Baraboo*
  - *Detroit*
  - *Minneapolis*
  - *Portland, OR*
  - *East Cleveland*
  - *And the list is growing ...*

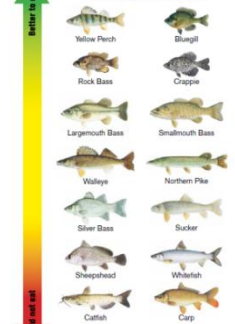
# Action Model Outcomes: Measurable Changes in Indicators

## Eating Fish from the Detroit River

### Fish are part of a healthy diet.

Most fish are safe to eat. But some fish have high amounts of chemicals in them. Eating some types of fish too often can cause health problems, especially for women and children.

These fish are lower in chemicals and are a better choice to eat.



These fish are higher in chemicals. You should not eat catfish or carp from the Detroit River.

### Trim and Cook Fish

Trimming and cooking off the fat can remove up to half the chemicals. Cook fish on a rack or grill.



### Better Spots for Catching Catfish

These lakes have been stocked with catfish. The catfish in these lakes have less chemical contamination than those in the Detroit River:

- Belleville Lake, Wayne County
- Newburgh Lake, Wayne County
- Pontiac Lake, Oakland County
- Stony Creek Impoundment, Macomb County
- Ford Lake, Washtenaw County

For details and a map, call the Michigan Department of Natural Resources - Fish Division:

**1-248-359-9040**

For more details and a free copy of the Michigan Family Fish Consumption Guide, call the Michigan Department of Community Health:

**1-800-648-6942**

or visit: [www.michigan.gov/fishandgameadvisory](http://www.michigan.gov/fishandgameadvisory)



## Lead in Our Community Rights! Responsibilities! Reactions!

*What is Happening at the Federal, State and Local Level?*  
Dr. Laurel Berman  
Region 5  
Agency for Toxic Substance Disease Registry

Ms. Tammy Moore  
RRP Rule  
Region 5 Lead Program, United States EPA

Ms. Jane Nickart  
Lead Poisoning Prevention Program  
State of Michigan

Mr. Ronald Levi  
Director of the Lead Poisoning Prevention Program  
City of Detroit

*What is Wayne State University Doing about Lead in our Environment?*  
Panel Discussion

Dr. Mary Derski  
Institute of Environmental Health Sciences  
Lead Poisoning Research and Community Involvement

Dr. Teresa Holtrop  
Children's Hospital of Michigan  
How Can We Help our Lead Poisoned Children?

Dr. Shawn McElmurry  
Civil and Environmental Engineering  
Lead in Soil and the Urban Gardening Movement

Dr. Lyke Thompson  
Director, Center for Urban Studies  
Lead and Healthy Homes

For more information contact: Erica Raglin  
Community Outreach Coordinator  
[eraglin@wayne.edu](mailto:eraglin@wayne.edu)  
313-577-5043



### FREE ADMISSION FOR COMMUNITY ORGANIZATION LEADERS

Tuesday, May 18, 2010  
5:30 PM-8:30 PM  
(Check-In begins at 5:00 PM)  
Online Registration Required by May 14<sup>th</sup>  
[www.events.wayne.edu/rsvp/lead](http://www.events.wayne.edu/rsvp/lead)

#### Breakout Sessions:

- What happens when your child is lead poisoned?  
Mr. Ronald Levi, City of Detroit
- What is WSU doing about lead in our environment?  
Drs. Mary Derski, Teresa Holtrop, Shawn McElmurry & Lyke Thompson
- Your child, lead prevention and treatment.  
Mr. Steve Leggat, City of Detroit, Building & Safety Engineering
- When will my house be inspected for lead?
- What are your legal responsibilities?  
Ms. Mary Moore, Wayne County Prosecutor's Office
- How can you prevent lead exposure?  
Ms. Tammy Moore, EPA Region 5, Ms. Rachel Wells, CLEARcorps, Ms. Lisa Goldstein, SDEV

Conference Location  
Wayne State University  
Eugene Applebaum College of Pharmacy  
and Health Sciences  
259 Mack Ave., Detroit, MI 48201  
(Lower Level Auditorium)

Free parking on the street or paid parking in the structure across John R

#### Raffle Prize!!!

Must be present to win  
A light meal will be provided during check-in



# Action Model: Measurable Changes that Impact Health



*From waste transfer facility to alfalfa field*



*Continued remediation of a manufactured gas plant*



*"The City with a Vision" –*  
[www.atsdr.cdc.gov/sites/brownfields](http://www.atsdr.cdc.gov/sites/brownfields)

**BARABOO RINGLING RIVERFRONT REDEVELOPMENT VIDEO**



**Thank you**

**Questions?**

**Laurel Berman, ATSDR**

**[LABerman@cdc.gov](mailto:LABerman@cdc.gov)**

**312-886-0840**