

Past Successes

- ☞ After multiple attempts we were awarded a Community-Wide Assessment Grant for the FY 2008.
- ☞ A Brownfields Committee was created with one member from each county from our Board of Directors.
- ☞ Committee members focused on gathering and prioritizing sites eligible for conducting Phase 1 and Phase 2 Environmental Site Assessments
- ☞ Contracted with ATC Associates via Qualifications Based Selection for Environmental Professionals
- ☞ 16 properties were assessed by the end of the grant period September 30, 2011. This Included:
 - 16 Phase 1's
 - 12 Phase 2's
 - 5 Remedial Action Plans.

FY 2008 Assessment Grant Financials

Total Project Budget: \$460,000.00

∞ EPA

- \$200,000.00 Hazardous Substances
- \$200,000.00 Petroleum

∞ Indiana Brownfields Program (15%)

- \$60,000.00



Tasks – Where the Money Went

- ☞ 1. Program Development & Community Outreach
 - Indiana 15 RPC \$30,000
- ☞ 2. Inventory and Prioritization
 - Indiana 15 RPC \$6,000
- ☞ 3. Up to 20 Phase I Environmental Site Assessments (ESA's)
 - Contractual \$55,000
- ☞ 4. Up to 12 Phase II ESA's
 - Contractual \$334,000
- ☞ 5. Up to 12 Remedial Action Plans, 3 Human Health Risk Assessment
 - Contractual \$35,000

- Home
- Board of Directors
- Staff
- Job Opportunities
- Newsletters
- Reports
- Agenda/Minutes
- Calendar
- Code Books
- Brownfields
- Map Images
- Photographs
- Address & Email
- IN 15 Location
- Other Links

What are Brownfields?

Brownfields are real property, the expansion, redevelopment, or reuse of which may be complicated by the presence or potential presence of a hazardous substance, pollutant, or contaminant. Cleaning up and reinvesting in these properties protects the environment, reduces blight, and takes development pressures off greenspaces and working lands. On this site you will find information about our current and past Brownfields projects through programs supported by U.S. EPA and the Indiana Brownfields Program.

Indiana 15 Regional Planning Commission has a Brownfields Team composed of a representative from each of our six counties. Along with Lisa Gehlhausen - Executive Director and Elliot Englert - Brownfields Coordinator, the coalition includes:

- Jim Taylor - Crawford County
- Larry Wehr - Dubois County
- Alan Cassidy - Perry County
- Melissa Bryant - Pike County
- Al Logsdon - Spencer County
- Rudy Freeman - Orange County

Indiana 15 applied for a Brownfields Cleanup Grant on behalf of Spencer County to remediate a second parcel of the former United Energy Facility near Troy, IN. The application was submitted November 28, 2011. EPA announces successful applicants in the summer of 2012.

Indiana 15 also applied for a Brownfields Assessment Grant for Coalitions to conduct Assessment activities on Brownfields throughout the six-county region. This application was submitted November 28, 2011 with a summer 2012 announcement as well.

In 2010 an EPA Brownfields Clean-up Grant was awarded to Pike County. More information on the project can be found at the following link: [Jean's Junction, Pike County, Indiana.](#)

In 2011 an EPA Brownfields Clean-up Grant was awarded to Spencer County. More information on the project can be found at the following link: [United Energy, Spencer County, Indiana.](#)

Indiana 15 has also been working with our partner Counties and Towns to continue to clean-up contaminated and/or blighted sites after we have conducted environmental assessments.

Old Birdseye School: The ESAs are done, and a Community Development Block Grant is being pursued for acquisition and demolition of this old school. More information will be provided as the process continues.

Old White Castle Plant – Orleans: The ESAs are done, and a Community Development Block Grant is being pursued for demolition of this old meat processing plant in the Town's historical district. More information will be provided as the process continues

In 2008 Indiana 15 received a grant from the U.S. Environmental Protection Agency to conduct Community-Wide Environmental Site Assessments (ESAs). The grant is for \$200,000.00 for Hazardous Substances ESAs, and \$200,000.00 for Petroleum ESAs. Additionally the Indiana Brownfields Program is contributing \$60,000.00.

The three year grant period ended September 30, 2011 in which 17 Phase I ESAs and 12 Phase II ESAs were successfully completed. Also several Remedial Action Plans and Human Health/Ecological Risk Assessments were completed to lead the commission on to present-day cleanup projects.

For further information, contact Elliot Englert at (812) 367-8455 - eenglert@ind15rpc.org

ArcGIS Indiana 15 RPC Brownfields Initiative

New Map My Content Help Sign Out

Details Add Basemap Save Share Print Measure Bookmarks Find address or place

Indiana 15 RPC Brownfields Initiative

This webmap shows Brownfields Sites in Crawford, Dubois, Orange, Perry, Pike, Spencer Counties as assessed by Indiana 15 Regional Planning Commission Brownfields Coalition.

Web Map by englert
Last Modified: July 31, 2012

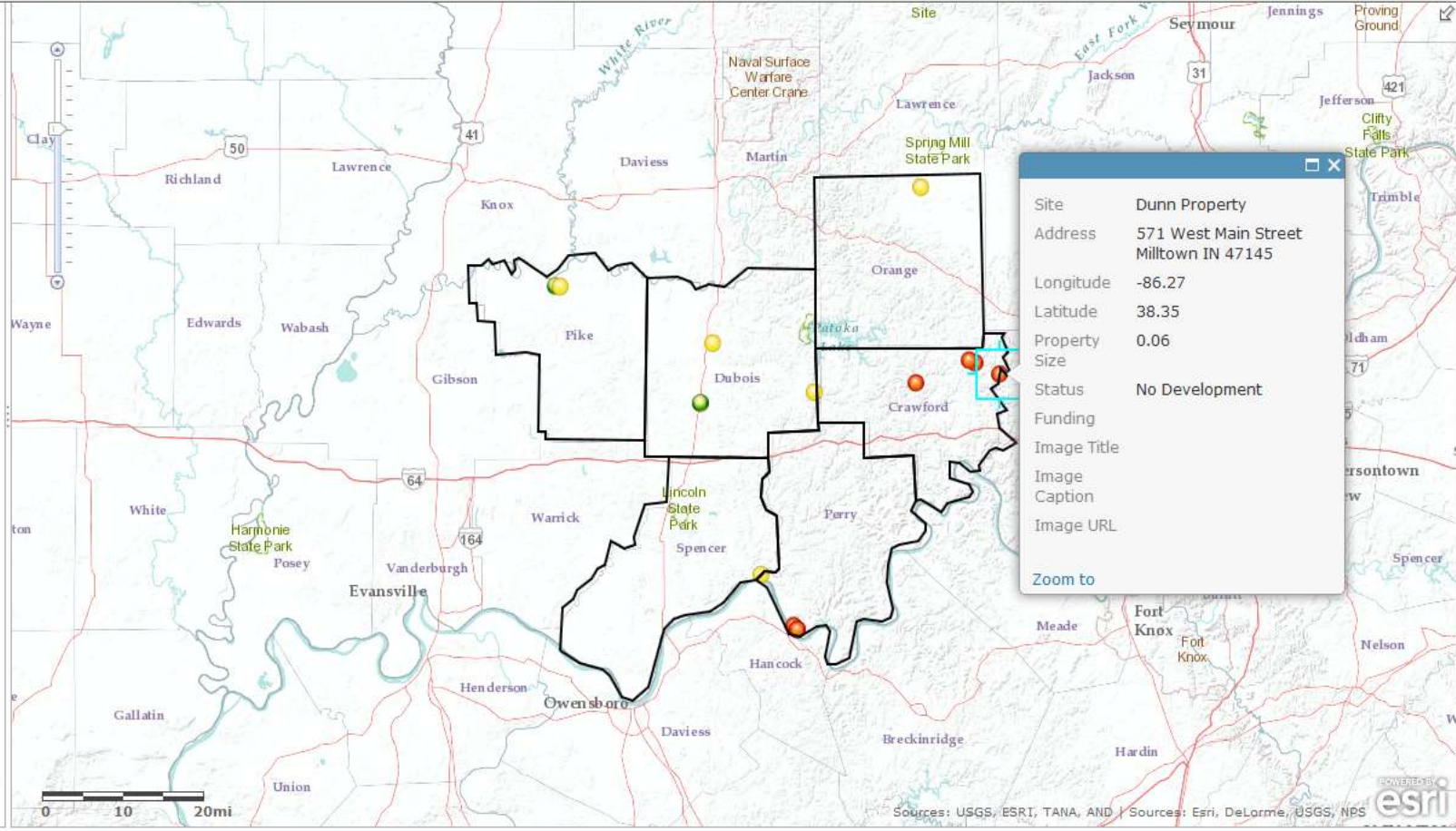
☆☆☆☆ (0 ratings, 0 comments, 23 views)

More Details...

Open this map in: ArcGIS Explorer Online

Make your own map
Add to this map
Make a new map

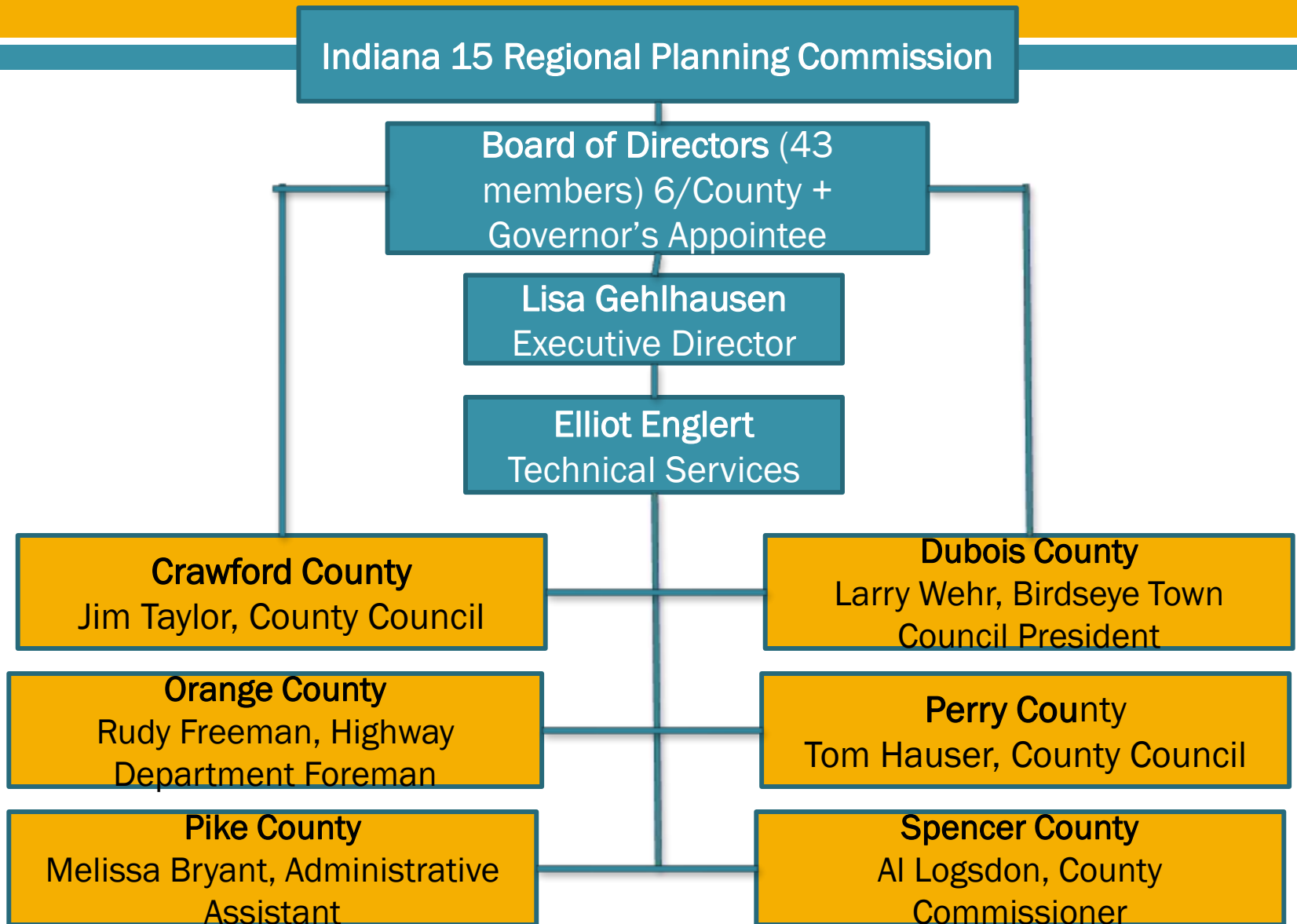
Esri.com Terms of Use Privacy Contact Us Report Abuse



Find: lights Next Previous Highlight all Match case

<http://bit.ly/NFOyTn>

Organization of the Brownfields Coalition



Future Projects

Plan to apply for FY 2013 Assessment Grant for Coalitions – Requires much pre-application planning

- Involving Brownfields Coalition
- Promoting public awareness
- Hosting a TAB workshop September 5, 2012.
- Gathering letters of support (Communities, Organizations, State)
- Preparing proposed budget
- Gathering demographic, socioeconomic and health data of target communities
- Learning from feedback of last year's application
- Letters of Leveraging Commitments

Pre-Application Planning

- ☞ Community Participation - August 28 held personal meetings with several town officials
 - We discussed the EPA Brownfields Program, Uses of assessment grant funds, what it can do for the communities in terms of economic development, and gathered potential sites in need of assessment
 - **French Lick** - Town Council President, Don Renner
 - **Paoli** - Town Council President, Mark Jones
 - **Tell City** - Mayor, Barbra Euing
 - **Cannelton** - Mayor, Mary Snyder
 - **Rockport** - Mayor, Harold Goffonet